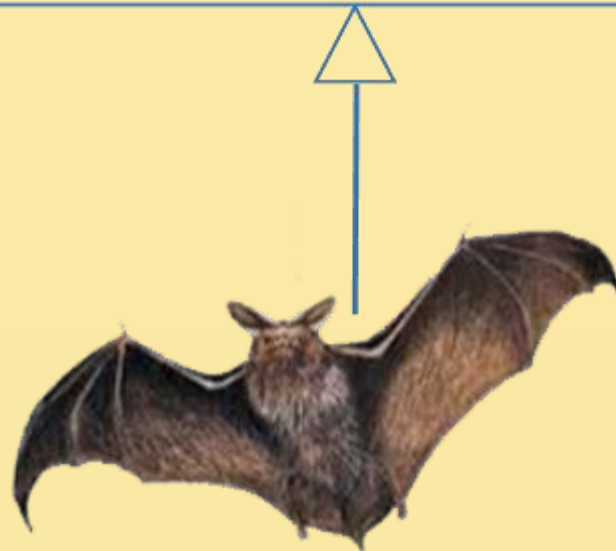


Identification of Refused Bequest Code Smells

Elvis Ligu, Alexander Chatzigeorgiou, Theodore Chaikalis, Nikolaos Ygeionomakis

Department of Applied Informatics, University of Macedonia, Greece

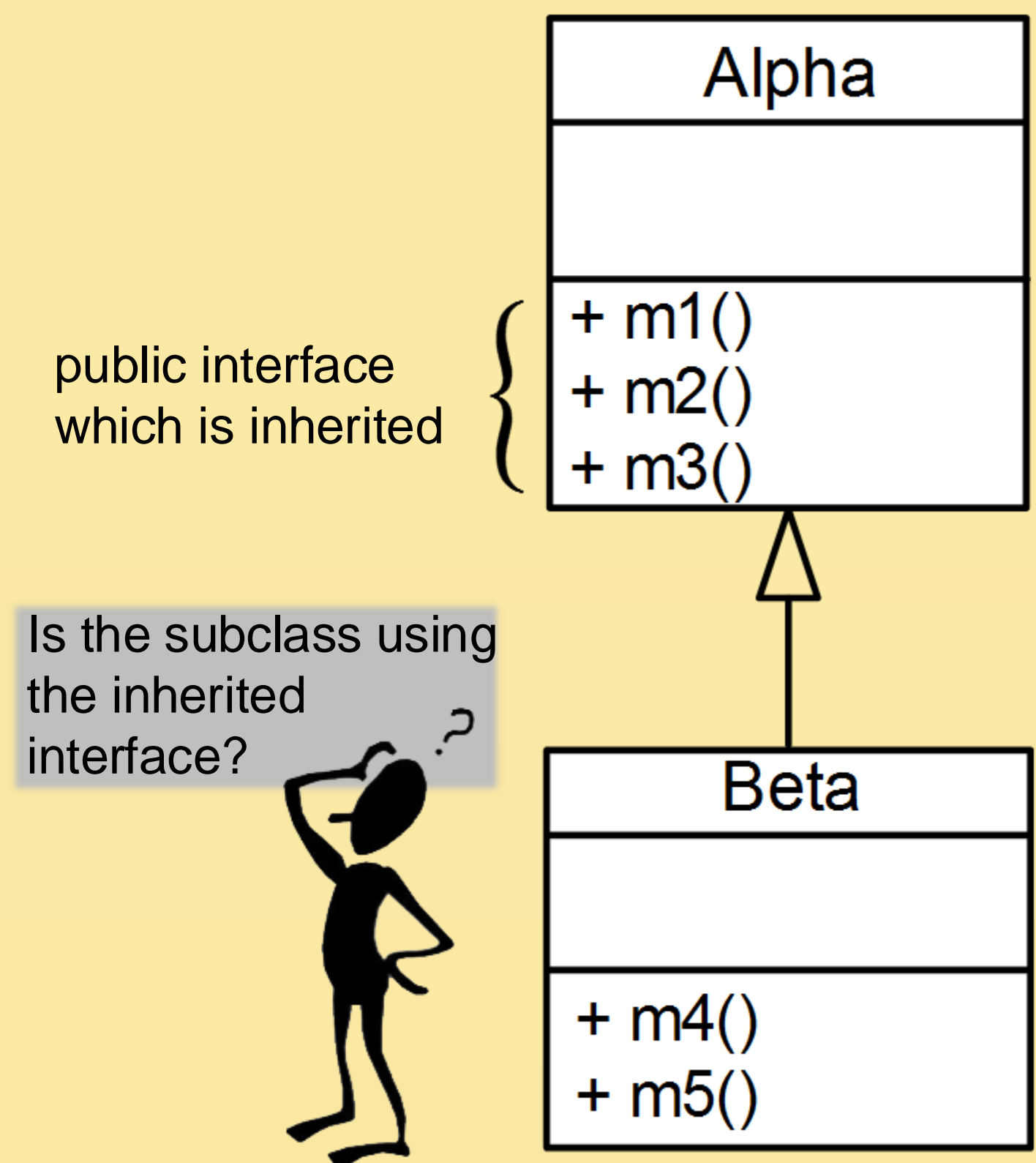
1. CONTEXT



+ breatheAir()
+ ~~regulateBodyTemp()~~
+ giveBirthToLiveYoung()
+ ~~produceMilkIfFemale()~~
+ ~~swim()~~

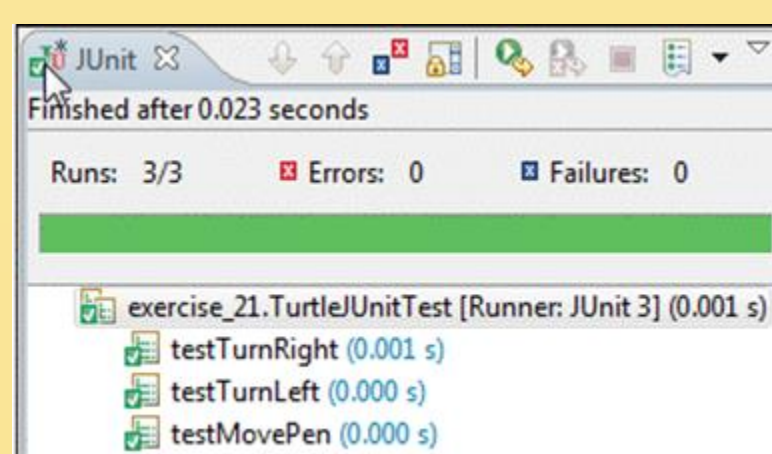
"a subclass does not want to support the interface inherited from its parent class" [Fowler]

2. PROBLEM



3. KEY CONCEPT

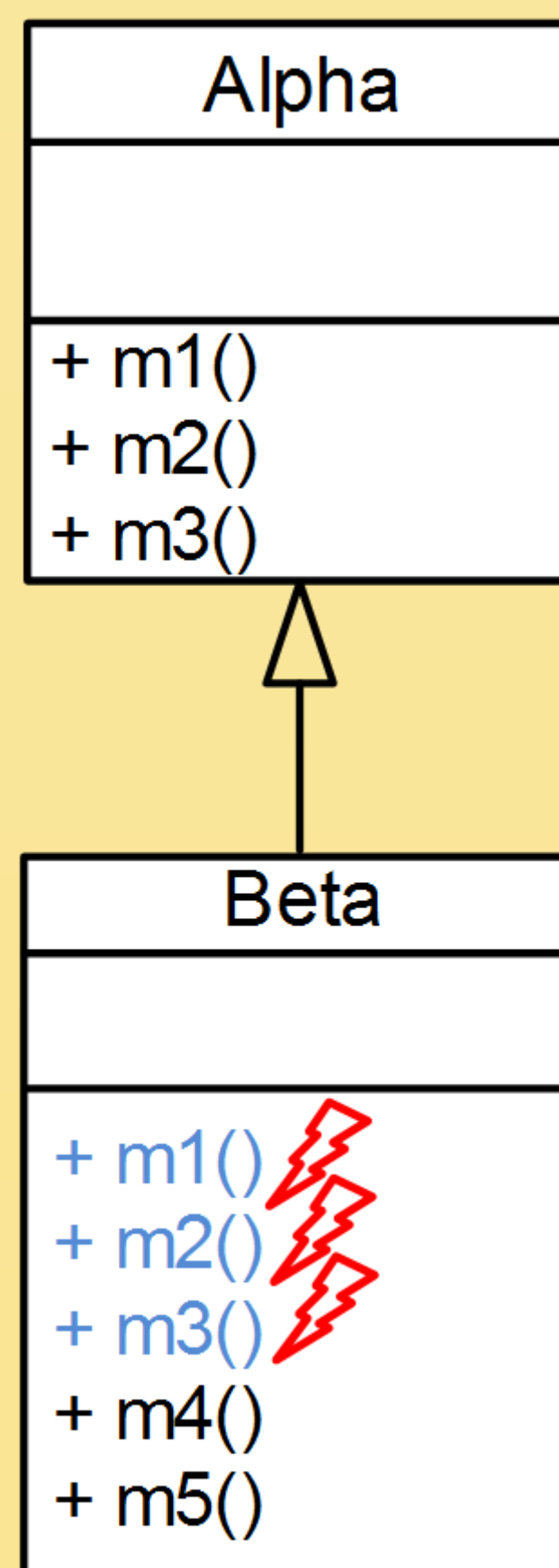
1. Override inherited methods and introduce errors into them
2. Check whether unit tests fail



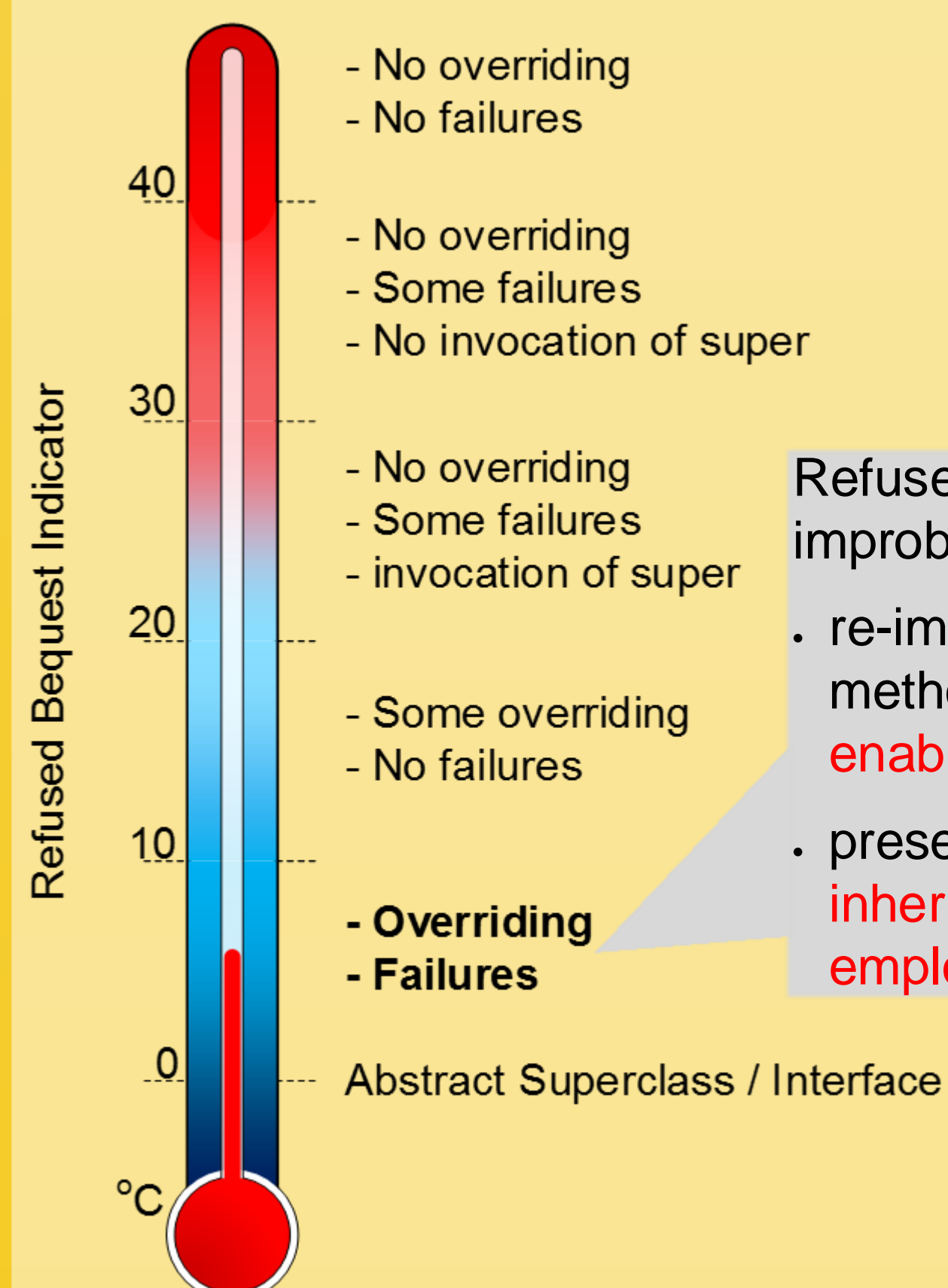
No one is using the inherited methods



Signs of Refused Bequest



4. THERMOMETER



Refused Bequest is highly improbable:

- re-implemented inherited methods → goal is to enable polymorphism
- presence of errors → inherited functionality is employed

5. TOOL



Download from:

http://java.uom.gr/ref_bequest

eclipse

Implementation on top of JDDeodorant Eclipse plug-in



Csse
.uom.gr

<http://csse.uom.gr>
achat@uom.gr



This research has been co-financed by the European Union (European Social Fund – ESF) and Greek national funds through the Operational Program "Education and Lifelong Learning" of the National Strategic Reference Framework (NSRF) – Research Funding Program: Talis – Athens University of Economics and Business - SOFTWARE ENGINEERING RESEARCH PLATFORM.



ICSM'2013, Early Research Achievements Track, September 24, 2013